

WEST POINT RESERVOIR  
MANAGEMENT REPORT

2007

Prepared by

R. Graves Lovell  
District Fisheries Biologist

J. Chris Greene  
District Fisheries Supervisor

Rodney A. McVay  
District Fisheries Biologist Aide

Department of Conservation and Natural Resources  
Wildlife and Freshwater Fisheries Division  
Fisheries Section

September 1, 2007

## **Introduction**

West Point Reservoir, a 25,864-acre impoundment on the Chattahoochee River (Table 1), was previously sampled in 1989, 1993, 1996, 1999, 2000, and 2003 according to the management program guidelines (Alabama Reservoir Management Manual 1999). Historically, West Point Reservoir was known for a quality, largemouth bass fishery. However, decreasing fertility over the last 17 years has gradually changed the dynamics of the fish population. A reduction of total fish abundance was detected during standard sampling in 1993. Standard sampling in subsequent years indicated reduced largemouth bass growth and abundance. Reduced largemouth bass abundance and growth, and increased spotted bass abundance were documented by Maceina and Bayne (2001). As a result, the states of Alabama and Georgia reduced the minimum size limit for largemouth bass on West Point Reservoir from 16 to 14 inches. There is no minimum size limit for spotted bass. Although the last assessment in 2003 indicated little change in the bass population, an increased abundance of threadfin shad and smaller gizzard was observed.

“An Angler’s Guide to Interpreting Alabama Wildlife and Freshwater Fisheries Reservoir Reports” provides a detailed description of fisheries terms used in this report.

This guide is available on the Department’s website at:

<http://www.outdooralabama.com/fishing/freshwater/where/reservoirs/guide.pdf>.

## **Methods**

West Point Reservoir was sampled during spring 2007 by electrofishing in order to assess largemouth bass, spotted bass, and crappie populations. Crappie are not normally targeted during spring sampling; however, fall 2006 trap-netting did not yield an adequate sample size to describe the population. Fourteen new sites with preferred bass habitat were systematically chosen such that the sample would represent the entire reservoir (Figure 1). These sites were sampled for 30 minutes each on April 6, 9, 10, and 11. It was necessary to sample additional areas with preferred habitat in order to obtain a minimum of 100 crappie stock-size and larger. The crappie sampling was not standardized, thus an index of relative abundance was not applicable.

Total length (mm) and weight (g) were recorded for all target fish collected. Largemouth bass, spotted bass, and black crappie otoliths were extracted and placed in vials with a glycerine/alcohol solution to improve clarity. Whole otoliths were later viewed under a dissecting scope, and ages were determined by District-IV personnel. Otoliths from older fish were sectioned to increase aging accuracy and viewed with a compound microscope (Maceina 1988).

A spring creel survey was conducted during 2007 to provide additional information on the bass and crappie fisheries. This survey consisted of sampling one weekend day each week during the months of March, April, and May (13 survey days). Four access areas were utilized: Dewberry, Anderson Park, Rocky Point, and Veasey Creek. Boat trailers were counted at each of these access areas prior to conducting the survey, and sample probabilities were based upon the frequency and total number of trailers present during preliminary surveys. Catch and harvest information was obtained

by interviewing anglers upon trip completion. Largemouth bass and spotted bass total lengths were recorded by 25 mm length groups. Black crappie total lengths were recorded by 10 mm length groups.

Access point creel surveys provide the best opportunity to interview the most anglers. However, these surveys mainly encounter boat anglers using public boat ramps and may neglect bank, pier, or resident anglers; thus, the results are often biased towards bass and crappie anglers. Catch and harvest data collected from year to year provide an accurate method of assessing changes in sportfish populations and angler harvest rates.

Bass tournament information was collected through the Bass Anglers Information Team (BAIT). The results of the program were reviewed with regard to West Point Reservoir and appropriate comments are included in this report.

## **Results and Discussion**

The spring 2007 bass sample included 155 largemouth bass representing 12 year-classes and 199 spotted bass representing 7 year-classes. Parity in catch rates between the two species was more evident in the 2007 sample than in the 2003 sample (Rider et al. 2003). The spotted bass catch rate decreased in 2007 to nearly half of that observed in 2003; while the largemouth bass catch rate was similar to that in 2000 and 2003 (Table 3). Catch rates alone suggested that the previously observed trend of spotted bass dominance over largemouth bass was not as evident in 2007.

The largemouth bass sample was predominately quality and preferred-sized fish; however, they were more evenly distributed among the different RSD size groups, compared to that of 2003 (Figure 4). Most notably, stock-sized largemouth bass

abundance had increased and was similar to that observed during sampling years 1989 to 1999 (Table 3). Consequently, stock-sized spotted bass have steadily decreased since 2000, and spotted bass have become more abundant in the larger size groups (Figure 5). Growth of largemouth bass in West Point Reservoir was about average compared to other Alabama reservoirs, while spotted bass growth was slightly lower than the state average. As expected, spotted bass growth through Age 3 had increased since 2003 in response to the reduced intra-specific competition.

An annual mortality estimate for largemouth bass was calculated to be 30% between the ages of 2 and 12 years. Annual mortality rate for spotted bass was calculated to be 62%. Both of these annual mortality estimates are similar to estimates calculated for largemouth and spotted bass in Bartlett's Ferry in 2007 (Greene et al. 2007). The oldest largemouth bass collected in this sample was 12 years and the oldest spotted bass was 7 years (Tables 5 and 6).

Based on overall quality of bass fishing, West Point Reservoir ranked 6<sup>th</sup> of 20 reservoirs that had 5 or more tournament reports in the 2006 BAIT program (Abernethy 2007). The relatively high catch rate of larger bass was largely responsible for this high ranking. West Point ranked 2<sup>nd</sup> for the least number of hours to catch a 5 pound bass. BAIT data from West Point also suggested a gradual increase of total bass catch rates from 1987 to 2006. Consequently, the average size of bass caught gradually decreased during this period. This is likely a reflection of the increased spotted bass component over the last decade, as well as the reduced largemouth bass length limit.

Historically, crappie have been difficult to collect during standard fall trap-net sampling on West Point Reservoir, thus spring electrofishing has often been used to

supplement the sample. Only 16 fish were collected with 60 net nights of effort in fall 2006; therefore, this data was not analyzed due to small sample size. A total of 134 black crappie were collected using electrofishing in spring 2007. Crappie growth was normal, where some fish reached 9 inches by Age-2 and all by Age-3. The 2002 year class was noticeably weak (Table 7). A weak 2002 year class of crappie was also observed in Bartlett's Ferry Reservoir during Fall 2002 trap-net sampling (McHugh et al. 2003). Electrofishing does not adequately collect crappie less than Age-3; therefore inferences about the upcoming fishery were not possible.

The spring creel survey included interviews of 175 anglers who fished for 875.8 hours (Table 8). Fifty percent of the anglers surveyed were targeting bass and seven percent were fishing in a bass tournament. Twenty-nine percent of the anglers were fishing for crappie, while twenty percent were fishing for catfish or no particular species.

The anglers surveyed caught 521 total black bass. Of these, 39% were greater than 14 inches and 61% were less than 14 inches. Less than five percent of the bass caught were harvested and all of these were spotted bass. Sixty-seven percent of the crappie caught were over 9 inches and 34% of these fish were harvested. Bass fishing is still the main attraction for West Point Reservoir anglers. This attraction is mostly driven by tournaments and recreational purposes that practice catch-and-release, as is the case in most reservoirs today.

## Conclusions

- The fishery should be sampled again in 2010 according to the Reservoir Sampling Program.
- The long-observed process of oligotrophication and increased spotted bass abundance may be stabilizing. Largemouth bass recruitment appears to be increasing while spotted bass is decreasing.
- Low harvest rates limit the effectiveness of the 14-inch minimum length limit on largemouth bass as a management tool; however, it has likely increased tournament participation.
- Fall trap-netting is not an efficient means of collecting crappie in West Point Lake. Future sampling of crappie should employ electrofishing gear in the spring.

## **Literature Cited**

- Abernethy, D. L. 2007. Bass anglers information team 2004 annual report. Alabama Department of Conservation and Natural Resources, Montgomery.
- Alabama Reservoir Data Collections. 2004. Alabama Department of Environmental Management, Montgomery.
- Alabama Reservoir Management Program. 1999. Alabama Department of Conservation and Natural Resources, Montgomery.
- Greene, J.C., R.G. Lovell, and R.A. McVay. 2007. Bartlett's Ferry Reservoir Management Report 2007. Alabama Department of Conservation and Natural Resources, Montgomery.
- Jenkins, R.M. 1967. The influence of some environmental factors on the standing crop and harvest of fishes in U.S. reservoirs. Pages 298-321 *in* Reservoir Fishery Symposium. American Fisheries Society, Southern Division, Bethesda, Maryland.
- Maceina, M.J. 1988. Simple grinding procedure to section otoliths. *North American Journal of Fisheries Management* 8:141-143.
- Maceina, M.J. and D.R. Bayne. 2001. Changes in the black bass community and fishery with oligotrophication in West Point Reservoir, Georgia-Alabama. *North American Journal of Fisheries Management* 21(4):745-755.
- McHugh, J.J., S.J. Rider, and T.R. Powell. 2003. Bartlett's Ferry Reservoir Management Report 2003. Alabama Department of Conservation and Natural Resources, Montgomery.
- Rider, S.J., J.J. McHugh, and T.R. Powell. 2003. West Point Reservoir Management Report 2003. Alabama Department of Conservation and Natural Resources, Montgomery.
- Ryder, R. A. 1965. A method for estimating the potential fish production of north-temperate lakes. *Transactions of the American Fisheries Society* 94:214-218.

TABLE 1. West Point Reservoir morphometric, physical, and chemical characteristics.

---



---

|                             |   |
|-----------------------------|---|
| Surface area                | 25,864 surface acres                      |
| Drainage area               | 3,380 square miles                        |
| Full pool elevation         | 635 feet-msl                              |
| Mean annual fluxuation      | 8 feet                                    |
| Shoreline distance          | 525 miles                                 |
| Shoreline development index | 23.3                                      |
| Mean depth                  | 23 feet                                   |
| Maximum depth               | 79 feet                                   |
| Total dissolved solids      | 86.3 mg/L<br>(ADEM 2004)                  |
| Morphoedaphic index         | 3.75 TDS/mean depth (ft.)<br>(Ryder 1965) |
| Chlorophyll-a               | 14.05 µg/L<br>(ADEM 2004)                 |
| Growing season              | 220 frost free days<br>(Jenkins 1967)     |
| Date of Impoundment         | 1974                                      |

---

TABLE 2. Fish stocked by ADCNR in West Point Reservoir, 1983-2007.

| Species             | Year | No/Acre | Size (in) | Total   |
|---------------------|------|---------|-----------|---------|
| Hybrid Striped Bass | 1983 | 9.8     | 1         | 253,696 |
|                     | 1984 | 10.4    | 1         | 269,639 |
|                     | 1985 | 15.1    | 1         | 391,076 |
|                     | 1986 | 10.0    | 1         | 259,079 |
|                     | 1987 | 20.1    | 1         | 521,412 |
|                     | 1988 | 19.9    | 1         | 514,331 |
|                     | 1989 | 15.4    | 1         | 398,570 |
|                     | 1990 | 10.0    | 1         | 258,810 |
|                     | 1991 | 10.8    | 1         | 280,204 |
|                     | 1992 | 5.0     | 1         | 130,000 |
|                     | 1993 | 24.3    | 1         | 629,516 |
|                     | 1994 | 20.1    | 1         | 520,000 |
|                     | 1995 | 24.9    | 1         | 644,910 |
|                     | 1996 | 25.1    | 1         | 649,400 |
|                     | 1997 | 23.1    | 1         | 597,800 |
|                     | 1998 | 15.0    | 1         | 387,947 |
|                     | 1999 | 15.0    | 1         | 388,792 |
|                     | 2000 | 15.0    | 1         | 387,717 |
|                     | 2001 | 12.6    | 1         | 326,469 |
|                     | 2002 | 10.0    | 1         | 260,101 |
| 2003                | 15.0 | 1       | 388,020   |         |
| 2006                | 2.2  | 1       | 56,480    |         |
| Striped Bass        | 1990 | 1.0     | 1         | 24,988  |
|                     | 1992 | 6.8     | 1         | 176,400 |
|                     | 2005 | 0.9     | 1         | 24,320  |

TABLE 3. Relative stock density (RSD), catch per hour (CPH), substock ratio (SSR), and relative weight (Wr) of largemouth bass and spotted bass collected from West Point Reservoir.

| <b>LARGEMOUTH BASS</b> |      |                |                     |          |     |     |         |      |      |     |         |      |      |    |         |      |      |    |         |     |      |    |       |       |
|------------------------|------|----------------|---------------------|----------|-----|-----|---------|------|------|-----|---------|------|------|----|---------|------|------|----|---------|-----|------|----|-------|-------|
| Year                   | Gear | No. of Samples | Total Effort (hrs.) | Substock |     |     | RSD S-Q |      |      |     | RSD Q-P |      |      |    | RSD P-M |      |      |    | RSD M-T |     |      |    | Total |       |
|                        |      |                |                     | No.      | CPH | SSR | No.     | CPH  | Pct. | Wr  | No.     | CPH  | Pct. | Wr | No.     | CPH  | Pct. | Wr | No.     | CPH | Pct. | Wr | No.   | CPH   |
| 1989                   | EF   | 3              | 1.0                 | 2        | 2.0 | 2   | 25      | 25.0 | 25   | 100 | 51      | 51.0 | 50   | 91 | 25      | 25.0 | 25   | 96 | 1       | 1.0 | 1    | 93 | 104   | 104.0 |
| 1993                   | EF   | 4              | 1.7                 | 15       | 8.8 | 15  | 29      | 17.1 | 28   | 86  | 49      | 28.8 | 48   | 89 | 20      | 11.8 | 19   | 92 | 5       | 2.9 | 5    | 97 | 118   | 69.4  |
| 1996                   | EF   | 5              | 2.3                 | 11       | 4.8 | 11  | 25      | 10.9 | 25   | 80  | 28      | 12.2 | 27   | 82 | 43      | 18.7 | 42   | 82 | 6       | 2.6 | 6    | 90 | 113   | 49.1  |
| 1999                   | EF   | 5              | 2.1                 | 13       | 6.2 | 11  | 27      | 12.9 | 24   | 81  | 48      | 22.9 | 42   | 81 | 37      | 17.6 | 32   | 81 | 2       | 1.0 | 2    | 99 | 127   | 60.5  |
| 2000                   | EF   | 10             | 5.0                 | 18       | 3.6 | 17  | 14      | 2.8  | 13   | 82  | 56      | 11.2 | 52   | 79 | 34      | 6.8  | 31   | 82 | 4       | 0.8 | 4    | 96 | 126   | 25.2  |
| 2003                   | EF   | 9              | 4.5                 | 1        | 0.2 | 1   | 18      | 4.0  | 17   | 83  | 35      | 7.8  | 32   | 87 | 47      | 10.4 | 44   | 88 | 9       | 2.0 | 8    | 94 | 109   | 24.2  |
| 2007                   | EF   | 14             | 7.0                 | 8        | 1.1 | 5   | 36      | 5.1  | 24   | 83  | 46      | 6.6  | 31   | 82 | 50      | 7.1  | 34   | 86 | 15      | 2.1 | 10   | 88 | 155   | 22.1  |
| <b>LAKE AVERAGE</b>    |      |                |                     |          | 3.8 | 9   |         | 11.1 | 22   | 85  |         | 20.1 | 40   | 84 |         | 13.9 | 33   | 87 |         | 1.8 | 5    | 94 |       | 50.7  |

| <b>SPOTTED BASS</b> |      |                |                     |          |      |     |         |      |      |     |         |     |      |     |         |     |      |     |         |     |      |     |       |      |
|---------------------|------|----------------|---------------------|----------|------|-----|---------|------|------|-----|---------|-----|------|-----|---------|-----|------|-----|---------|-----|------|-----|-------|------|
| Year                | Gear | No. of Samples | Total Effort (hrs.) | Substock |      |     | RSD S-Q |      |      |     | RSD Q-P |     |      |     | RSD P-M |     |      |     | RSD M-T |     |      |     | Total |      |
|                     |      |                |                     | No.      | CPH  | SSR | No.     | CPH  | Pct. | Wr  | No.     | CPH | Pct. | Wr  | No.     | CPH | Pct. | Wr  | No.     | CPH | Pct. | Wr  | No.   | CPH  |
| 1989                | EF   | 5              | 2.5                 | 12       | 4.8  | 22  | 35      | 14.0 | 63   | 110 | 14      | 5.6 | 25   | 104 | 5       | 2.0 | 9    | 103 | 1       | 0.4 | 2    | 124 | 68    | 27.2 |
| 1993                | EF   | 5              | 2.5                 | 8        | 3.2  | 73  | 6       | 2.4  | 55   | 97  | 4       | 1.6 | 36   | 97  | 1       | 0.4 | 9    | 86  |         | 0.0 | 0    |     | 19    | 7.6  |
| 1996                | EF   | 5              | 2.3                 | 4        | 1.7  | 50  | 7       | 3.0  | 88   | 88  | 1       | 0.4 | 13   | 87  |         | 0.0 | 0    |     |         | 0.0 | 0    |     | 12    | 5.2  |
| 1999                | EF   | 5              | 2.5                 | 61       | 24.4 | 76  | 64      | 25.6 | 80   | 93  | 16      | 6.4 | 20   | 92  |         | 0.0 | 0    |     |         | 0.0 | 0    |     | 141   | 56.4 |
| 2000                | EF   | 10             | 5.0                 | 96       | 19.2 | 152 | 51      | 10.2 | 81   | 94  | 11      | 2.2 | 17   | 97  | 1       | 0.2 | 2    | 114 |         | 0.0 | 0    |     | 159   | 31.8 |
| 2003                | EF   | 7              | 3.2                 | 63       | 19.7 | 57  | 80      | 25.0 | 73   | 94  | 23      | 7.2 | 21   | 95  | 6       | 1.9 | 5    | 99  | 1       | 0.3 | 1    | 104 | 173   | 54.1 |
| 2007                | EF   | 14             | 7.0                 | 38       | 5.4  | 24  | 85      | 12.1 | 53   | 95  | 62      | 8.9 | 39   | 95  | 11      | 1.6 | 7    | 99  | 3       | 0.4 | 2    | 92  | 199   | 28.4 |
| <b>LAKE AVERAGE</b> |      |                |                     |          | 11.2 | 65  |         | 13.2 | 70   | 96  |         | 4.6 | 24   | 95  |         | 0.9 | 5    | 100 |         | 0.2 | 1    | 107 |       | 30.1 |

TABLE 4. Non-target species observed during routine sampling of West Point Reservoir, 2006-2007.

---

---

| Species                  |
|--------------------------|
| <b>Bluegill</b>          |
| <b>Brook Silverside</b>  |
| <b>Brown Bullhead</b>    |
| <b>Channel Catfish</b>   |
| <b>Common Carp</b>       |
| <b>Gizzard Shad</b>      |
| <b>Green Sunfish</b>     |
| <b>Redbreast Sunfish</b> |
| <b>Redear Sunfish</b>    |
| <b>Spotted Sucker</b>    |
| <b>Threadfin Shad</b>    |
| <b>Warmouth</b>          |
| <b>Yellow Perch</b>      |

---

---

TABLE 5. Age composition and mean length of largemouth bass collected from West Point Reservoir, spring 2007.

| Annulus | Year Class | Number | Percent | CPE  | Mean Length | Standard Error | Length Range |
|---------|------------|--------|---------|------|-------------|----------------|--------------|
| 1       | 2006       | 10     | 6.5     | 1.4  | 170.4       | 11.4           | 125-220      |
| 2       | 2005       | 50     | 32.3    | 7.1  | 286.7       | 4.8            | 224-339      |
| 3       | 2004       | 29     | 18.7    | 4.1  | 346.4       | 6.5            | 270-423      |
| 4       | 2003       | 19     | 12.3    | 2.7  | 422.7       | 7.6            | 362-480      |
| 5       | 2002       | 17     | 11.0    | 2.4  | 424.3       | 8.1            | 361-477      |
| 6       | 2001       | 10     | 6.5     | 1.4  | 454.8       | 13.3           | 398-516      |
| 7       | 2000       | 4      | 2.6     | 0.6  | 497.3       | 42.9           | 372-564      |
| 8       | 1999       | 3      | 1.9     | 0.4  | 457.0       | 5.9            | 448-468      |
| 9       | 1998       | 7      | 4.5     | 1.0  | 526.9       | 11.7           | 479-582      |
| 10      | 1997       | 3      | 1.9     | 0.4  | 536.3       | 45.4           | 450-604      |
| 11      | 1996       | 2      | 1.3     | 0.3  | 557.0       | 15.0           | 542-572      |
| 12      | 1995       | 1      | 0.6     | 0.1  | 595.0       | -              | 595          |
| Total   |            | 155    | 100.0   | 22.1 |             |                |              |

TABLE 6. Age composition and mean length of spotted bass collected from West Point Reservoir, spring 2007.

| Annulus | Year Class | Number | Percent | CPE  | Mean Length | Standard Error | Length Range |
|---------|------------|--------|---------|------|-------------|----------------|--------------|
| 1       | 2006       | 46     | 23.1    | 6.6  | 143.7       | 6.0            | 82-212       |
| 2       | 2005       | 87     | 43.7    | 12.4 | 251.1       | 4.1            | 155-345      |
| 3       | 2004       | 50     | 25.1    | 7.1  | 310.6       | 3.9            | 261-382      |
| 4       | 2003       | 12     | 6.0     | 1.7  | 336.1       | 10.0           | 271-390      |
| 5       | 2002       | 1      | 0.5     | 0.1  | 430.0       | -              | 430          |
| 6       | 2001       | 2      | 1.0     | 0.3  | 428.5       | 14.5           | 414-443      |
| 7       | 2000       | 1      | 0.5     | 0.1  | 430.0       | -              | 430          |
| Total   |            | 199.0  | 100.0   | 28.4 |             |                |              |

TABLE 7. Age composition and mean length of black crappie collected from West Point Reservoir, spring 2007.

| Annulus | Year Class | Number | Percent | CPE* | Mean Length | Standard Error | Length Range |
|---------|------------|--------|---------|------|-------------|----------------|--------------|
| 2       | 2005       | 3      | 2.2     | -    | 217         | 9              | 200-232      |
| 3       | 2004       | 32     | 23.9    | -    | 264         | 4              | 215-293      |
| 4       | 2003       | 71     | 53.0    | -    | 274         | 3              | 202-310      |
| 5       | 2002       | 1      | 0.7     | -    | 242         | -              | 242          |
| 6       | 2001       | 18     | 13.4    | -    | 303         | 6              | 267-367      |
| 7       | 2000       | 2      | 1.5     | -    | 325         | 16             | 309-340      |
| 8       | 1999       | 3      | 2.2     | -    | 353         | 14             | 326-370      |
| 9       | 1998       | 2      | 1.5     | -    | 350         | 7              | 343-356      |
| 10      | 1997       | 1      | 0.7     | -    | 333         | -              | 333          |
| 11      | 1996       | 0      | 0.0     | -    | 0           | -              | -            |
| 12      | 1995       | 0      | 0.0     | -    | 0           | -              | -            |
| 13      | 1994       | 0      | 0.0     | -    | 0           | -              | -            |
| 14      | 1993       | 1      | 0.7     | -    | 374         | -              | 374          |
| Total   |            | 134    | 100.0   | -    |             |                |              |

\*No CPE was calculated because fish were not collected in a standardized manner.

TABLE 8. Fishery statistics for West Point Reservoir access area creel survey, March through May 2007.

|                    |                        | No. anglers | Hours        |
|--------------------|------------------------|-------------|--------------|
| Fishing for:       | Bass                   | 89          | 479.1        |
|                    | Crappie                | 51          | 245.5        |
|                    | Catfish                | 10          | 47.2         |
|                    | Anything               | 25          | 104.0        |
|                    | <b>TOTAL</b>           | <b>175</b>  | <b>875.8</b> |
| Bass tournament:   | Tournament             | 12          | 118.4        |
|                    | Pre-fishing            | 0           | 0.0          |
| Harvested:         | Largemouth bass        | 0           |              |
|                    | Spotted bass           | 23          |              |
|                    | Black crappie          | 52          |              |
|                    | White crappie          | 0           |              |
| Released:          | Bass >14 inches        | 200         |              |
|                    | Bass <14 inches        | 298         |              |
|                    | Crappie >9 inches      | 102         |              |
|                    | Crappie <9 inches      | 77          |              |
| Catch and harvest: |                        | CPH         | HPH          |
|                    | Bass <sup>1</sup>      | 1.09        | 0.05         |
|                    | Bass <sup>2</sup>      | 0.42        | 0.01         |
|                    | Crappie <sup>3</sup>   | 0.94        | 0.21         |
| County origin:     |                        | No. parties |              |
|                    | Chambers, AL           | 25          |              |
|                    | Lee, AL                | 34          |              |
|                    | Macon, AL              | 4           |              |
|                    | Randolph, AL           | 4           |              |
|                    | Russell, AL            | 2           |              |
|                    | Harris, GA             | 4           |              |
|                    | Rockdale, GA           | 4           |              |
|                    | GA - other             | 9           |              |
| FL                 | 2                      |             |              |
| Comments:          |                        | No. parties |              |
|                    | Water level too low    | 9           |              |
|                    | ADCNR doing a good job | 2           |              |
|                    | Poor weather           | 1           |              |
|                    | Fix lights at ramp     | 1           |              |
|                    | Stock FL bass          | 1           |              |

<sup>1</sup>Includes only bass anglers and fish of all sizes.

<sup>2</sup>Includes only bass anglers and fish 14 inches and larger.

<sup>3</sup>Includes only crappie anglers and fish of all sizes.

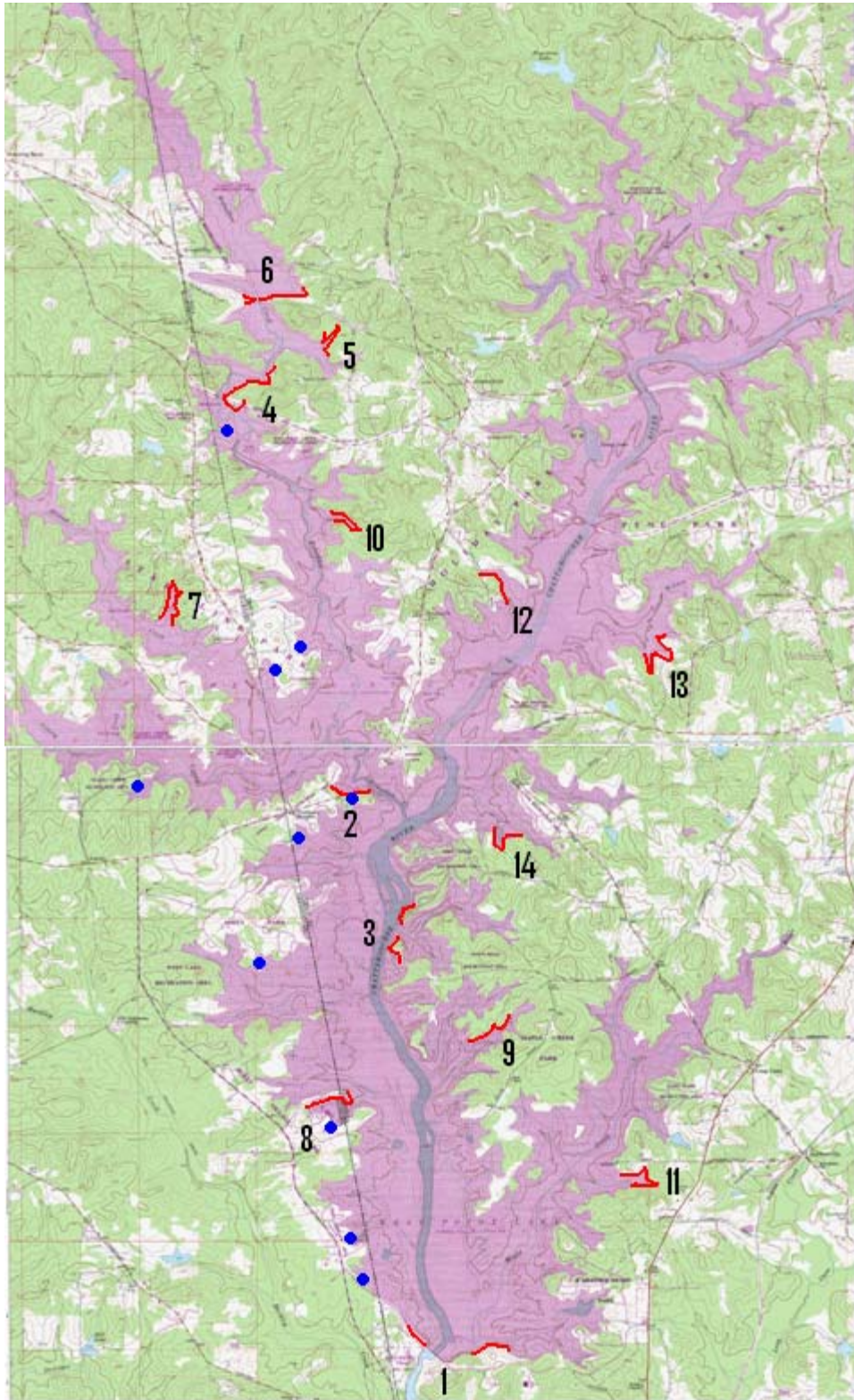


FIGURE 1. West Point Reservoir spring 2007 electrofishing sites (red lines) and public access areas on the Alabama side (blue dots).

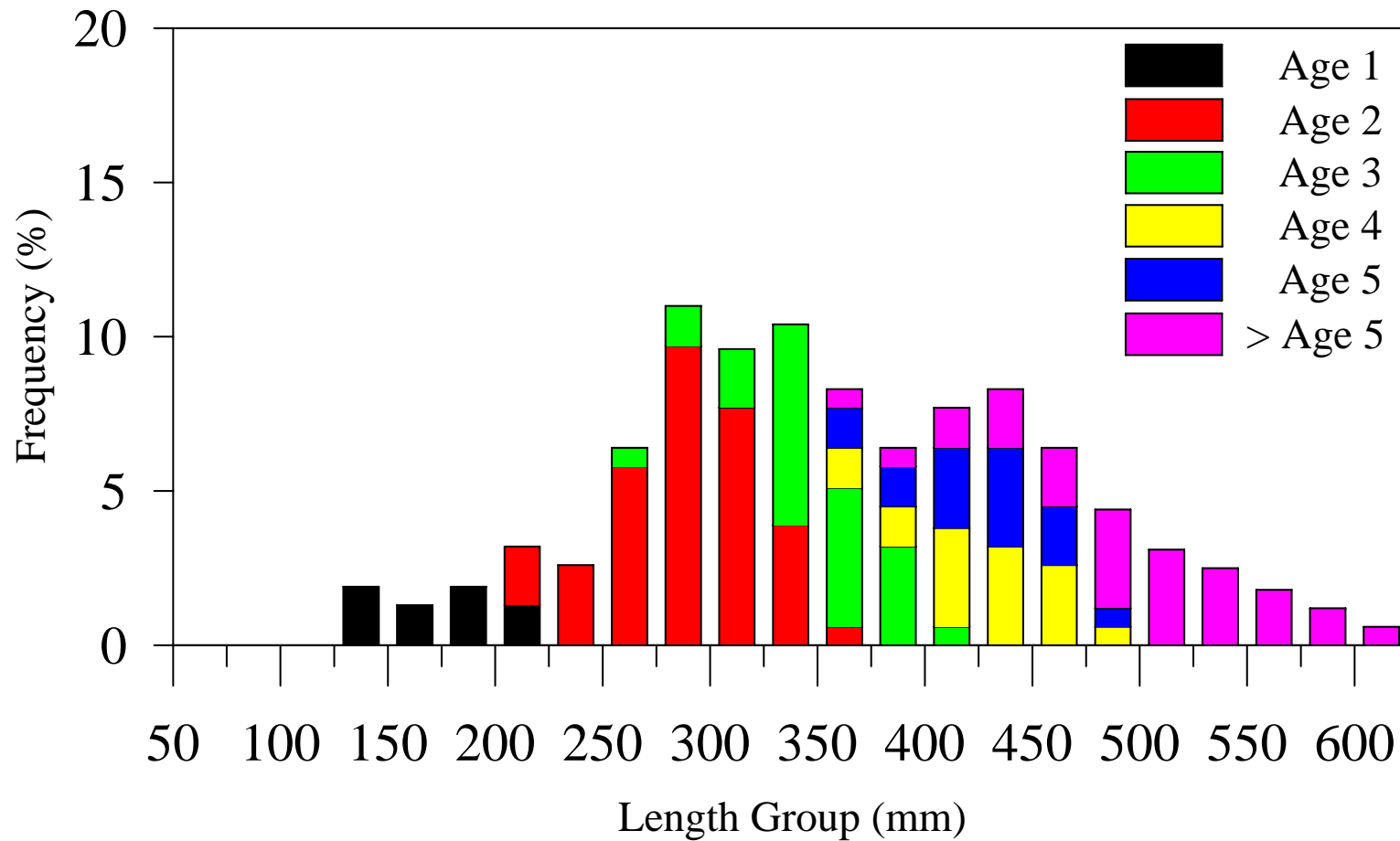


FIGURE 2. Length-at-age frequency of largemouth bass (N=155) collected from West Point Reservoir, spring 2007.

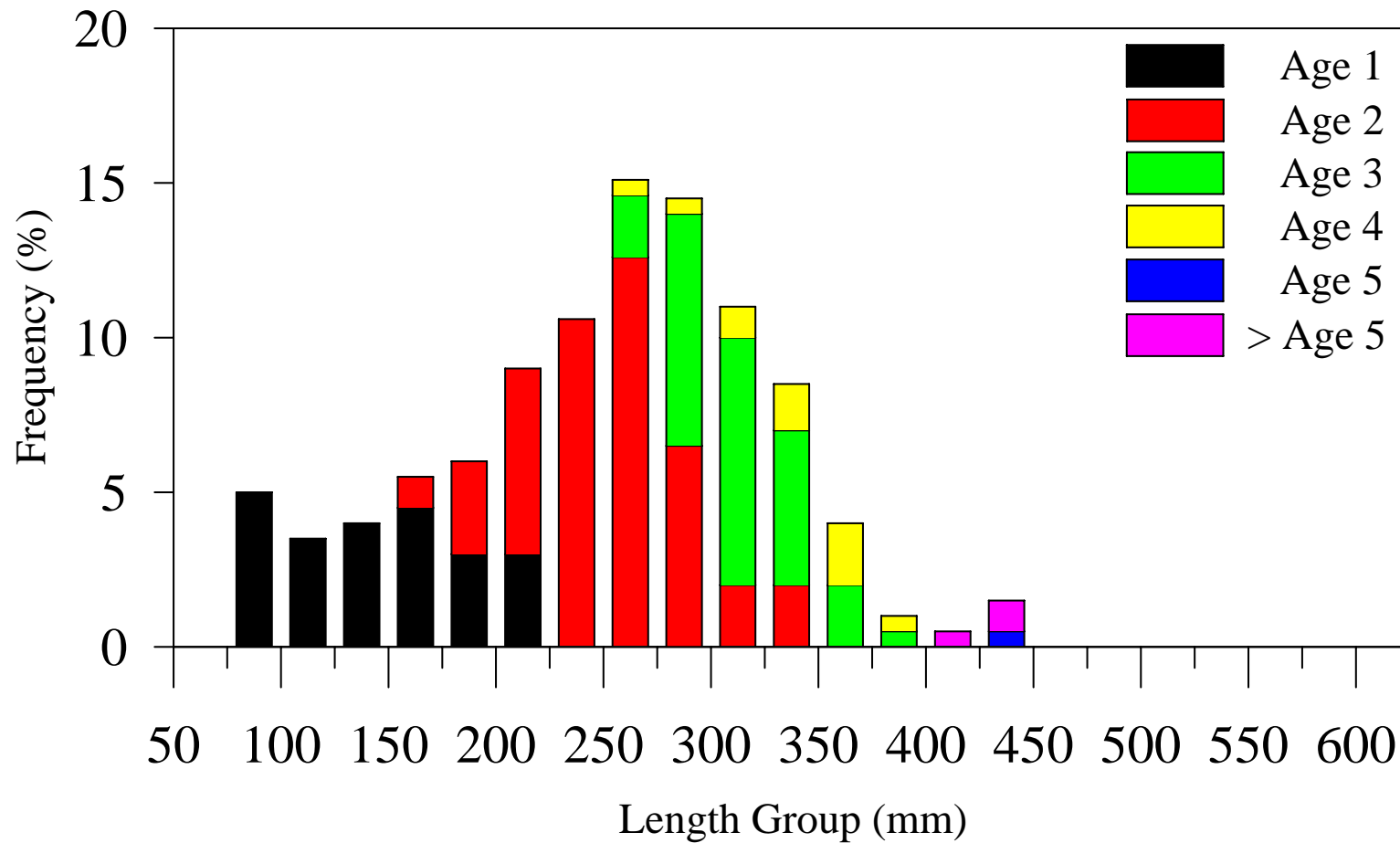


FIGURE 3. Length-at-age frequency of spotted bass (N=199) collected from West Point Reservoir, spring 2007.

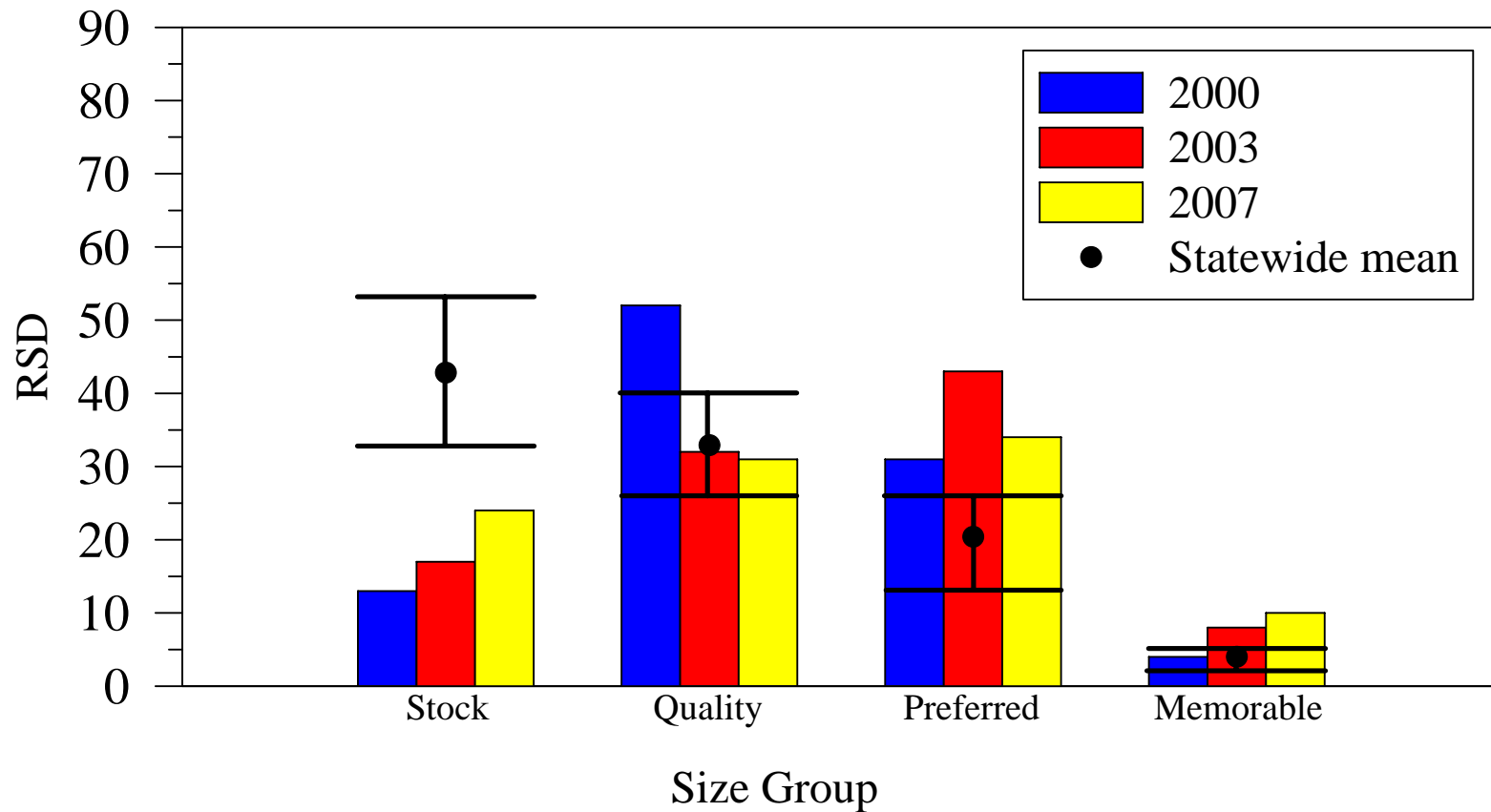


Figure 4. Relative stock density (RSD) and statewide means of largemouth bass in West Point Reservoir, spring 2000, 2003, and 2007. The I-beam denotes the 25th and 75th percentiles of RSD values of largemouth bass, statewide.

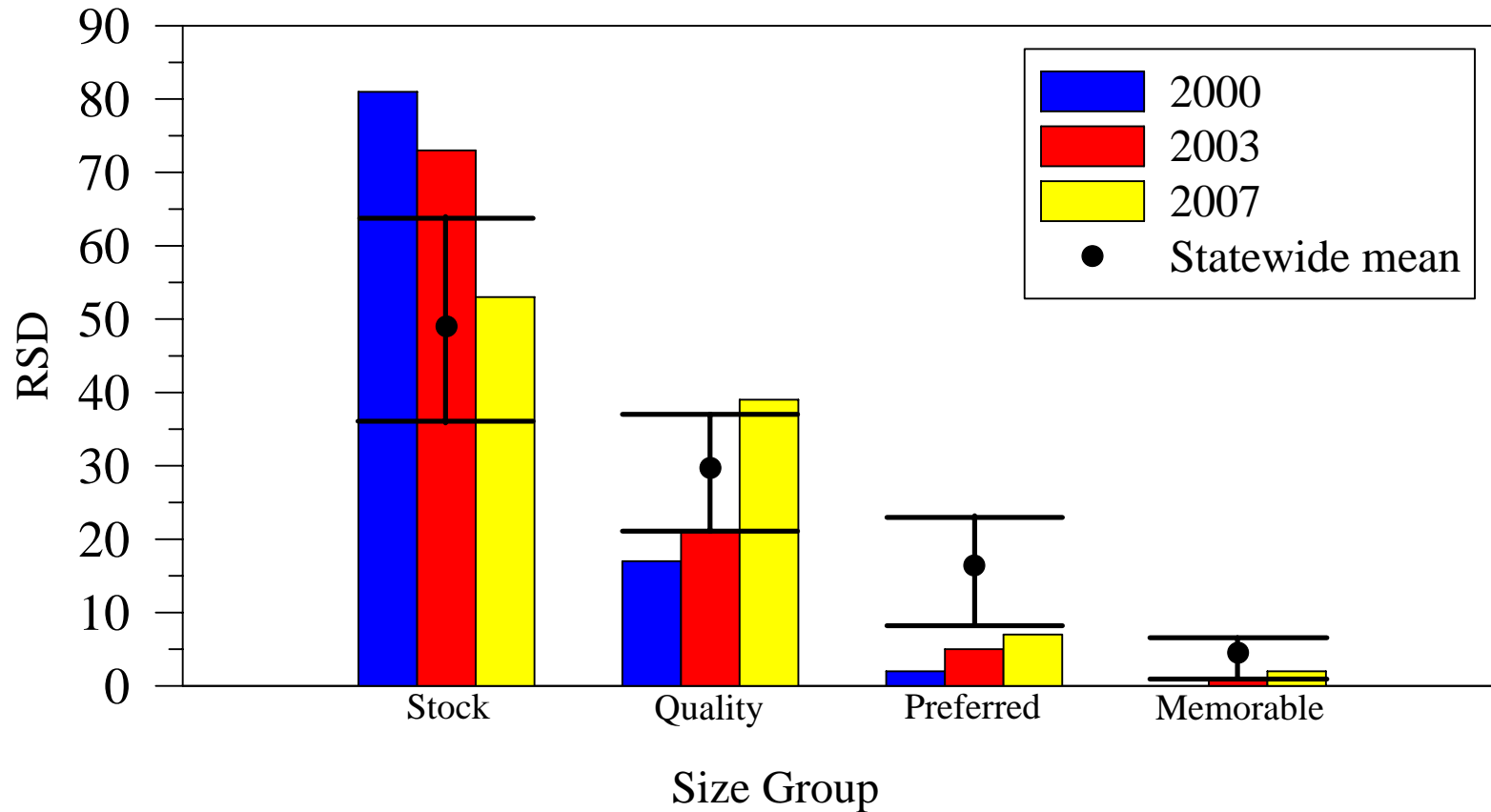


Figure 5. Relative stock density (RSD) and statewide means of spotted bass in West Point Reservoir, spring 2000, 2003, and 2007. The I-beam denotes the 25th and 75th percentiles of RSD values of spotted bass, statewide.

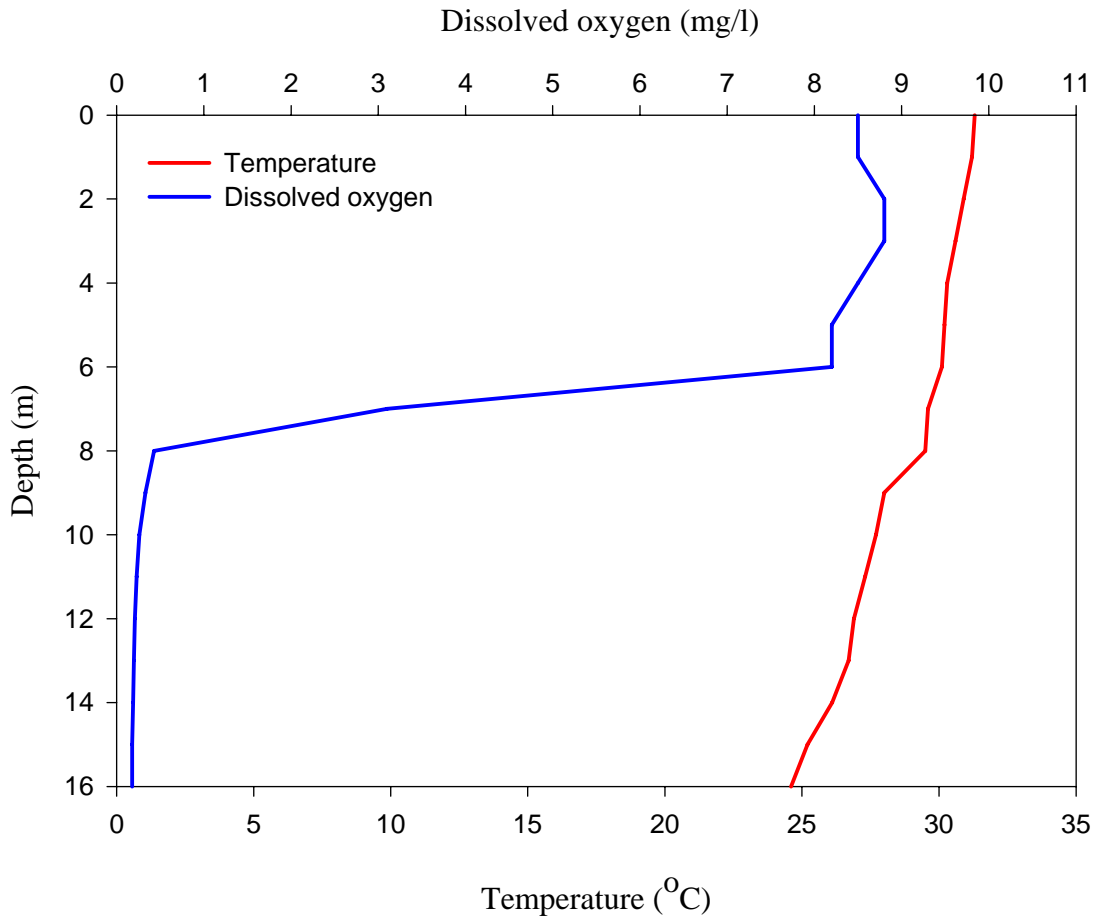


FIGURE 10. Temperature and dissolved oxygen profiles in West Point Reservoir forebay, August 21, 2007.